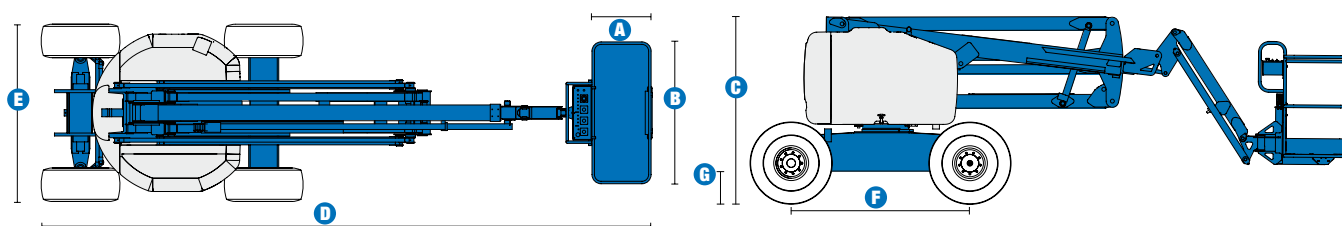
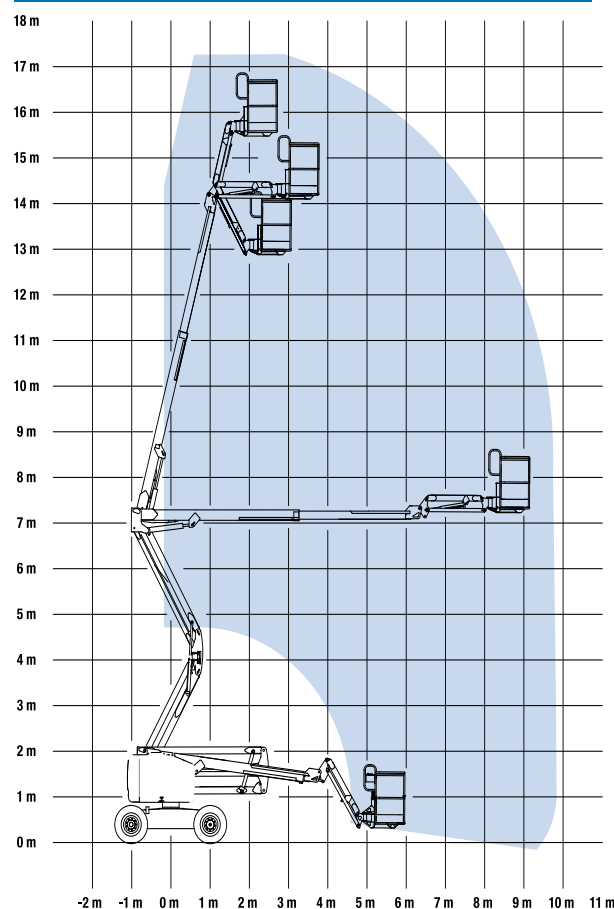


## Specifications



MODEL	Z™-51/30J RT	
MEASUREMENTS	Metric	US
Working height maximum*	17.62 m	57 ft 3 in
Platform height maximum	15.62 m	51 ft 3 in
Horizontal reach maximum	9.25 m	30 ft 4 in
Up-and-over clearance at primary arm	7.16 m	23 ft 6 in
<b>A</b> Platform length	76 cm	2 ft 6 in
<b>B</b> Platform width	1.83 m	6 ft
<b>C</b> Height - stowed	2.16 m	7 ft 1 in
<b>D</b> Length - stowed	7.50 m	24 ft 6 in
<b>E</b> Width	2.29 m	7 ft 6 in
<b>F</b> Wheelbase	2.03 m	6 ft 8 in
<b>G</b> Ground clearance - centre	39 cm	1 ft 3.5 in

### RANGE OF MOTION Z™-51/30J RT



PRODUCTIVITY		
Lift capacity	227 kg	500 lbs
Platform rotation	160°	160°
Vertical jib rotation	135°	135°
Turntable rotation	355° non-continuous	
Turntable tailswing	zero	zero
Drive speed - stowed	8 km/h	5 mph
Drive speed - raised**	1 km/h	0.6 mph
Gradeability - 4WD - stowed***	45%	45%
Turning radius - inside	1.68 m	5 ft 6 in
Turning radius - outside	4.50 m	14 ft 9 in
Controls	12 V DC proportional	
Tyres	355/55 D625 foam filled	

POWER		
Power source	Deutz F3L 2011 3 cylinder diesel 48 hp (35.8 kW)	
Auxiliary power unit	12 V DC	12 V DC
Hydraulic tank capacity	90 L	24 gal
Fuel tank capacity	64 L	17 gal

WEIGHT****		
	7,213 kg	15,900 lbs

**STANDARDS COMPLIANCE** CE EN280, PB-10-611-03

\* The metric equivalent of working height adds 2 m to platform height. U.S. adds 6 ft to platform height.  
 \*\* In lift mode (platform raised), the machine is designed to operate on firm, level surfaces only.  
 \*\*\* Gradeability applies to driving on slopes. See Operator's Manual for details regarding slope ratings.  
 \*\*\*\* Weight will vary depending on options and/or country standards.

## Features

### EASILY CONFIGURED TO MEET YOUR NEEDS

#### PLATFORM OPTIONS

- Steel 1.83 m (6 ft) (standard)
- Steel 1.22 m (4 ft)
- Steel 1.52 m (5 ft)

#### JIB

- 1.52 m (5 ft) jib boom

#### POWER

- Deutz Diesel F3L 2011F 48 hp (35.8 kW)

#### DRIVE

- 4x4

#### AXLE

- Active oscillating axle

#### TYRE OPTIONS

- Rough terrain foam-filled tyres (standard)
- Rough terrain non-marking foam-filled tyres

### STANDARD FEATURES

#### MEASUREMENTS

- 17.62 m (57 ft 3 in) working height
- 9.25 m (30 ft 4 in) horizontal reach
- 7.16 m (23 ft 6 in) up-and-over clearance
- Up to 227 kg (500 lb) lift capacity

#### PRODUCTIVITY

- Self-levelling platform
- Hydraulic platform rotation
- Fully proportional controls
- Drive enable system
- AC power to platform
- Horn
- Hour meter
- Tilt alarm
- 355° non-continuous turntable rotation
- Zero tailswing
- Positive traction drive
- Thumb rocker steer joystick
- Alarm package with beacon
- Certified load sensor

#### POWER

- All engines are emissions compliant
- 12 V DC auxiliary power
- Engine protection package
- Deutz intake air heater

### OPTIONS & ACCESSORIES

#### PRODUCTIVITY

- Platform swing gate
- Half mesh platform inserts with swing gate
- Platform top auxiliary rail
- Air line to platform
- Basic hostile environment kit
- Tool tray
- Fluorescent tube caddy
- Pipe cradle (pair)
- Platform work lights
- Front driving lights
- Lockable platform control box covers
- Tow package

#### POWER

- Engine gauge package
- 3000 watt AC generator (220 V/50hz)
- Diesel scrubber/spark arrestor
- Diesel spark arrestor muffler

